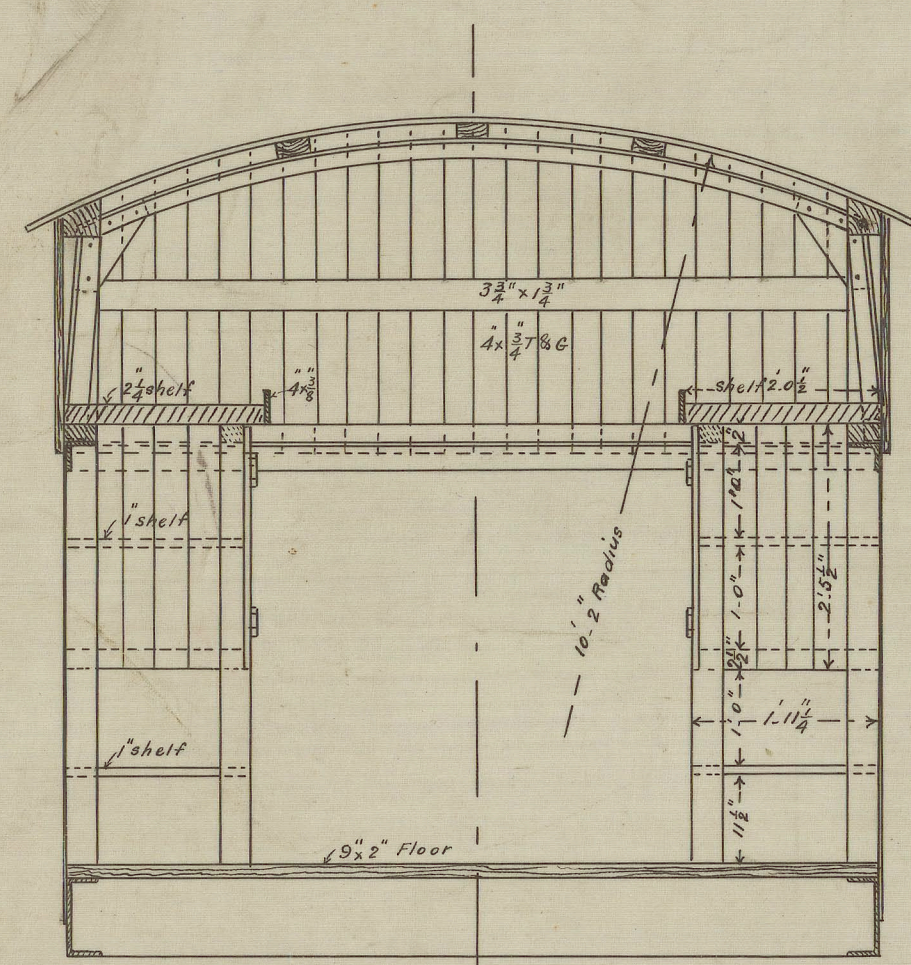


VICTORIAN RAILWAYS.

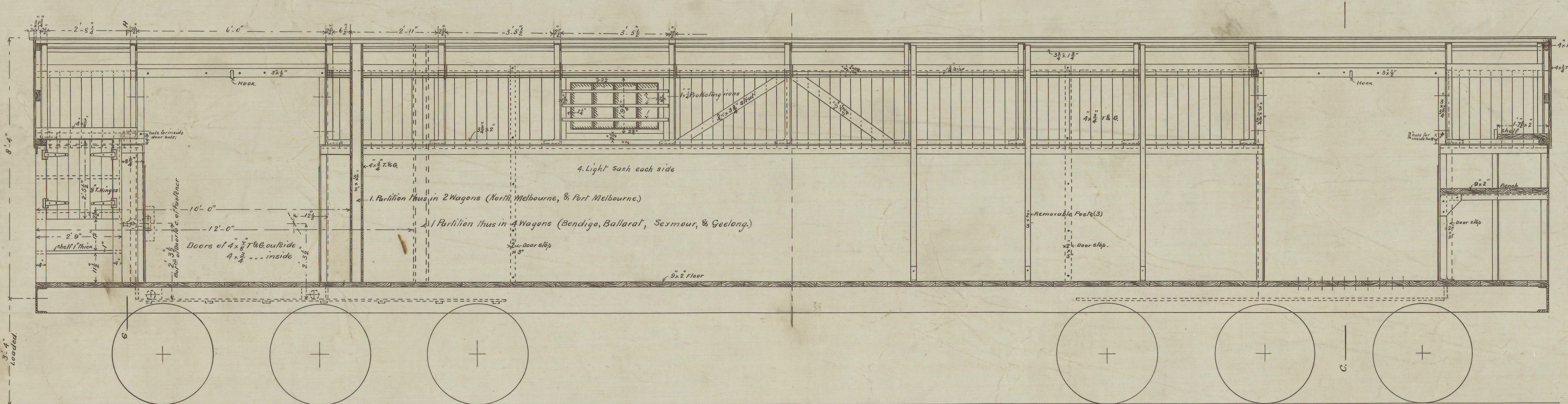
— ROLLING STOCK BRANCH. —

— Alteration to 00' Trucks for Breakdown Trains. —

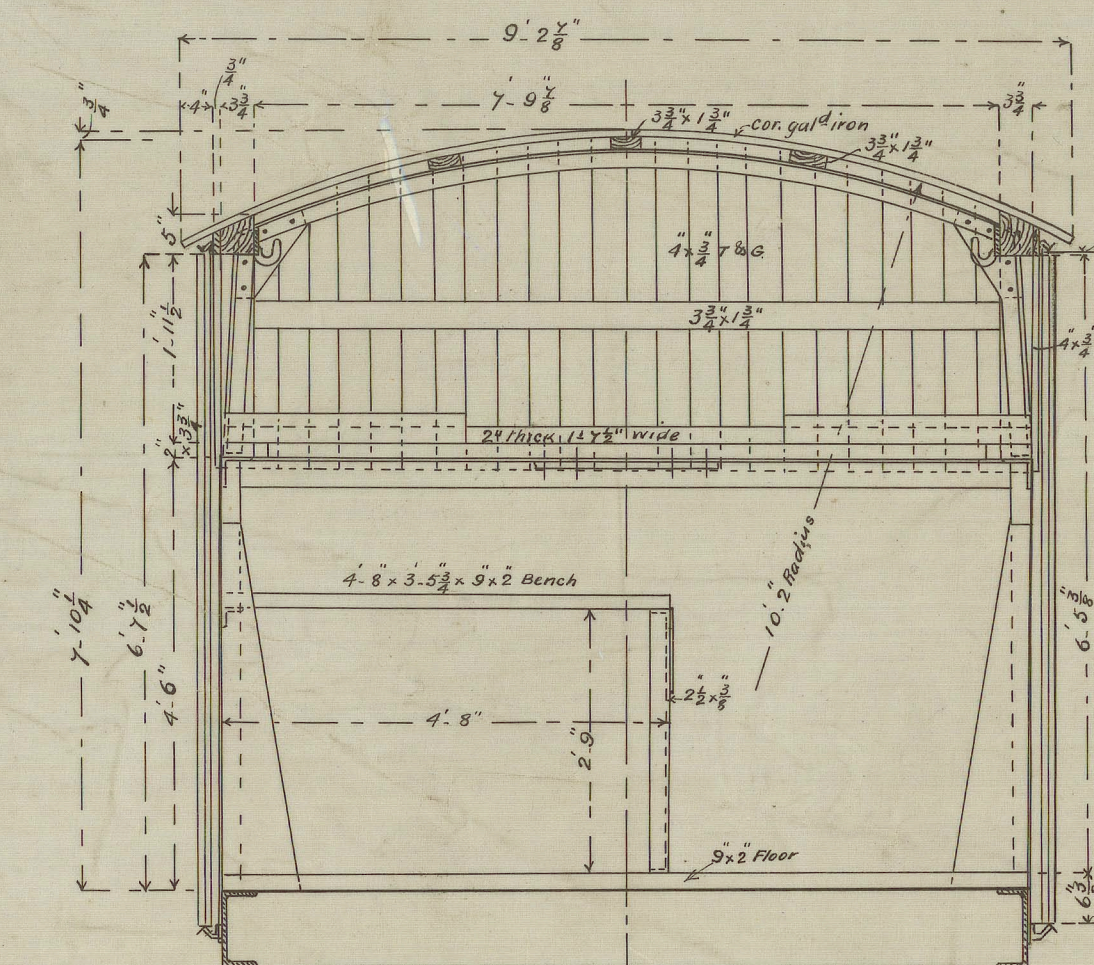
— Scales $\frac{1}{2}$ " = 1' & $\frac{3}{8}$ " = 1' Foot —



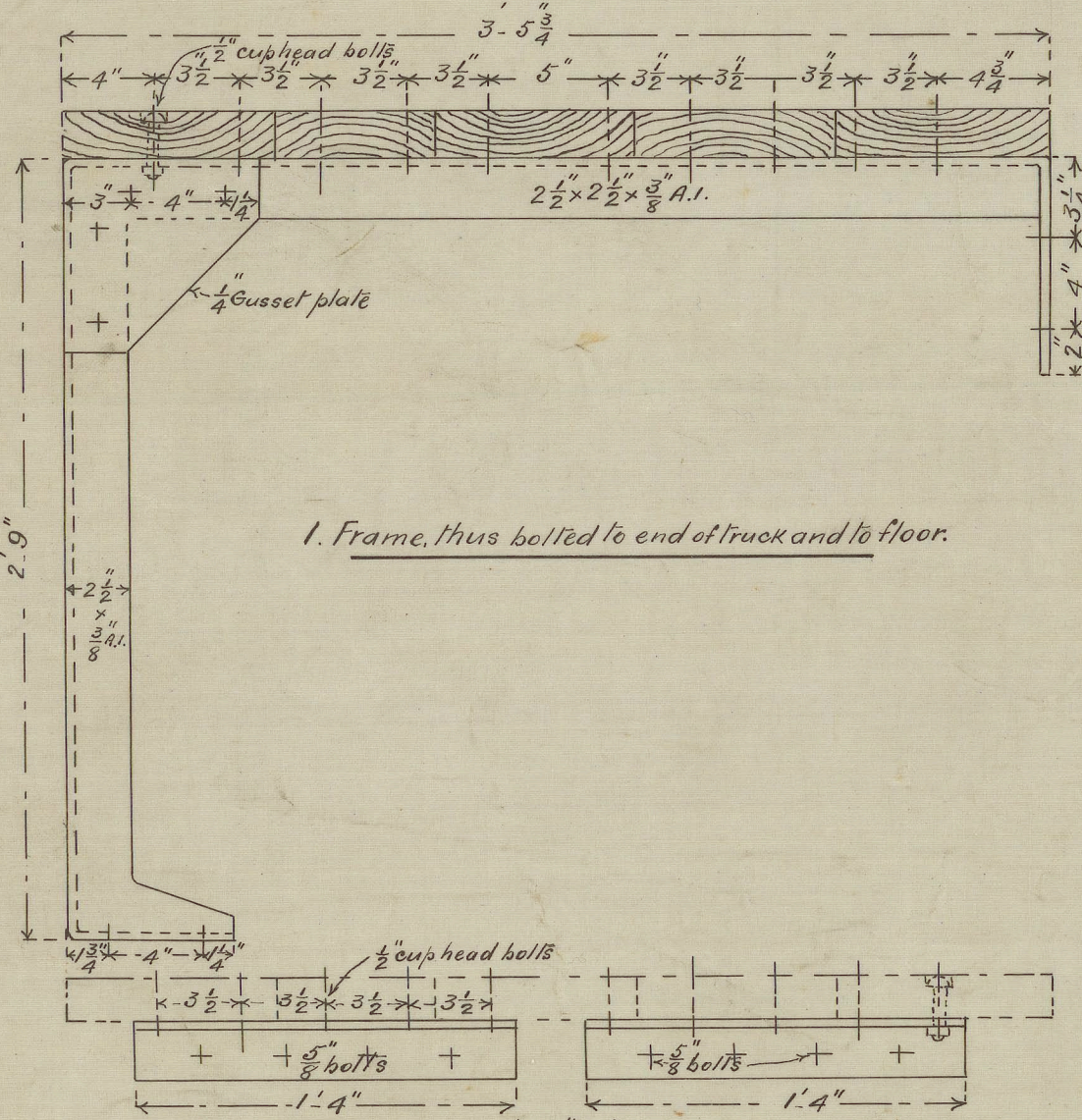
At G.H.



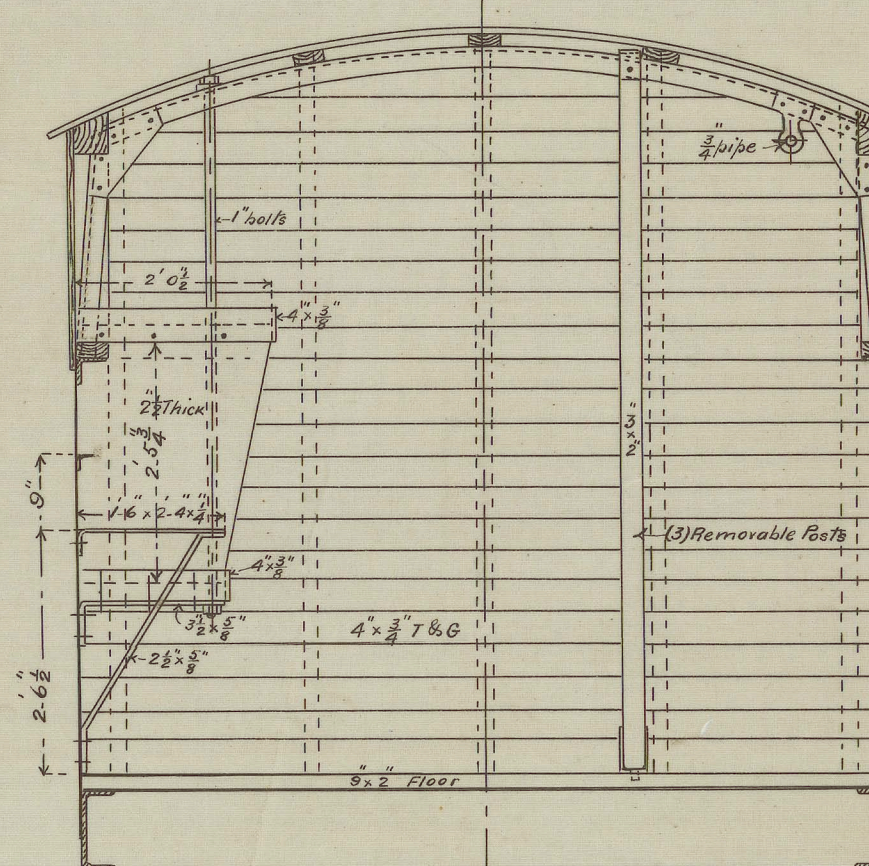
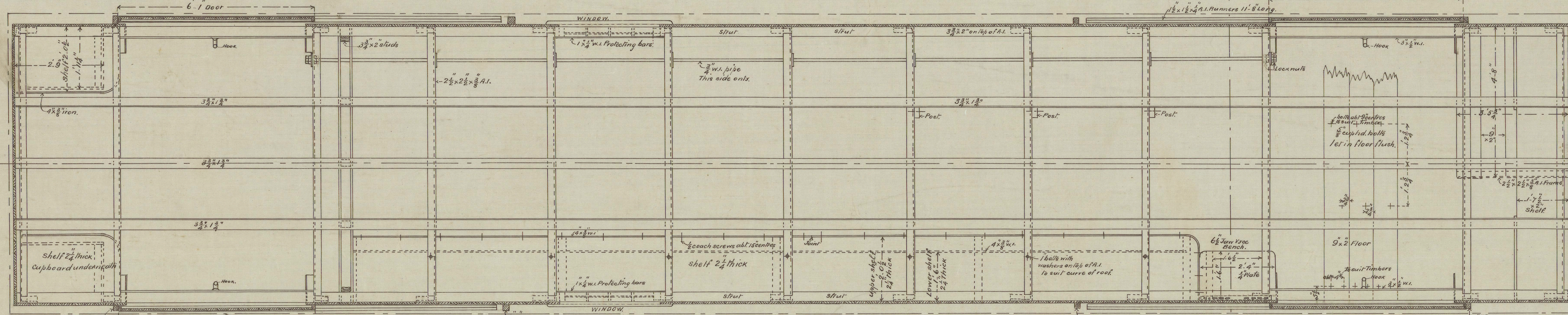
At A.B.



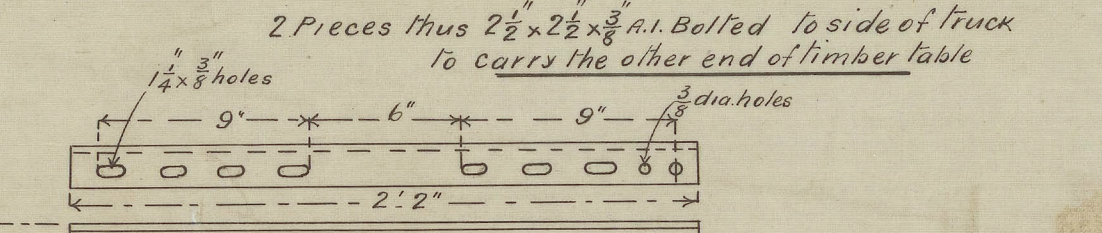
At C.D.



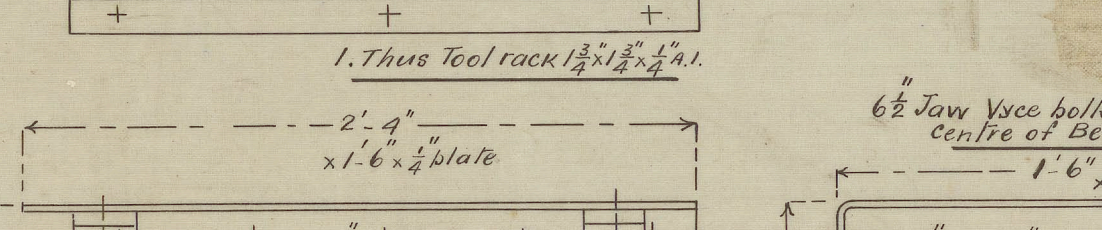
1. Frame, thus bolted to end of truck and to floor.



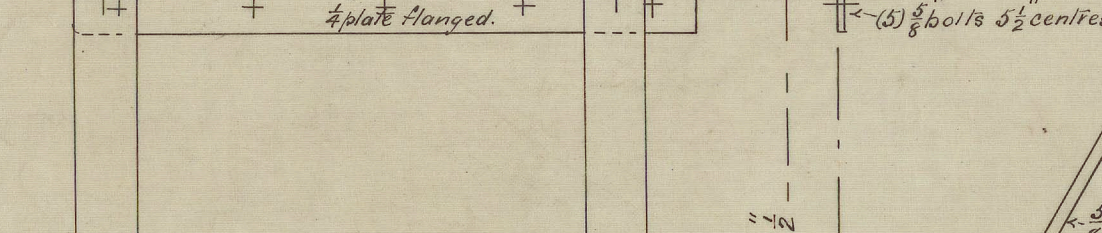
At E.F.



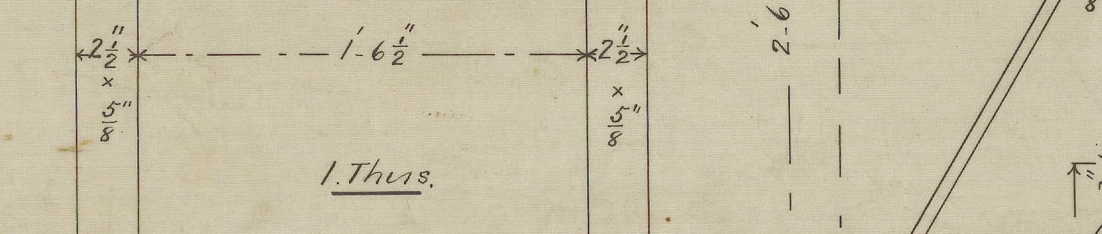
2. Pieces thus bolted to side of truck to carry the other end of timber table.



1. Thus bolted to end of truck and to floor.



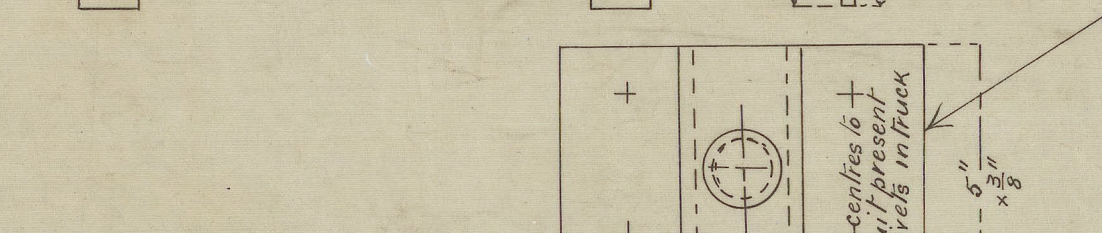
1. Thus bolted to end of truck and to floor.



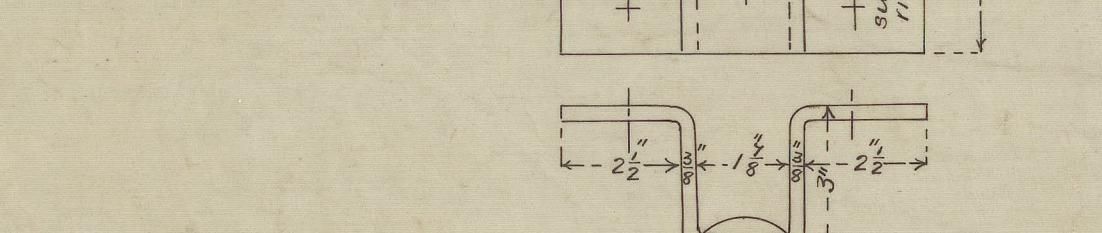
1. Thus bolted to end of truck and to floor.



1. Thus bolted to end of truck and to floor.



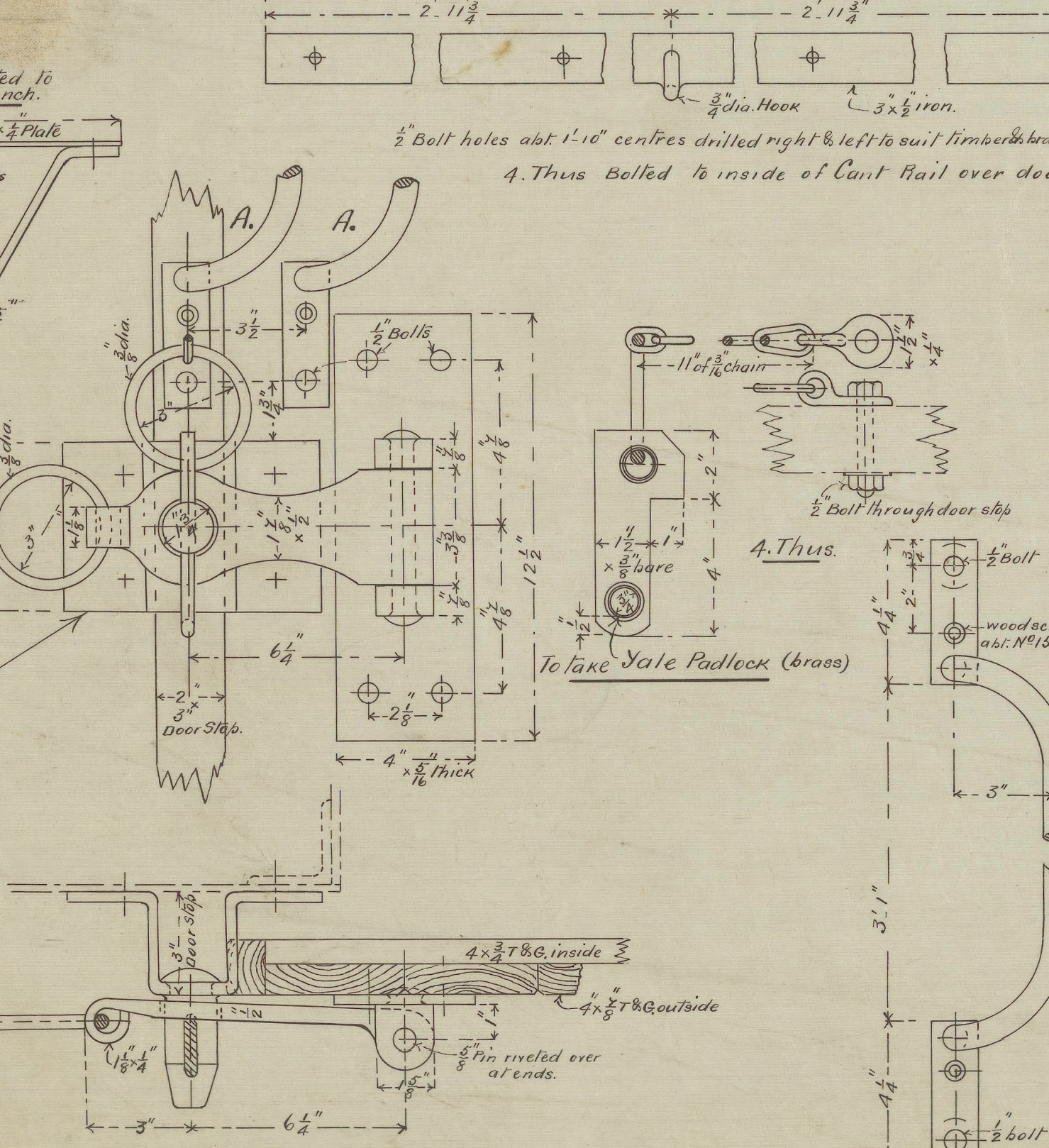
1. Thus bolted to end of truck and to floor.



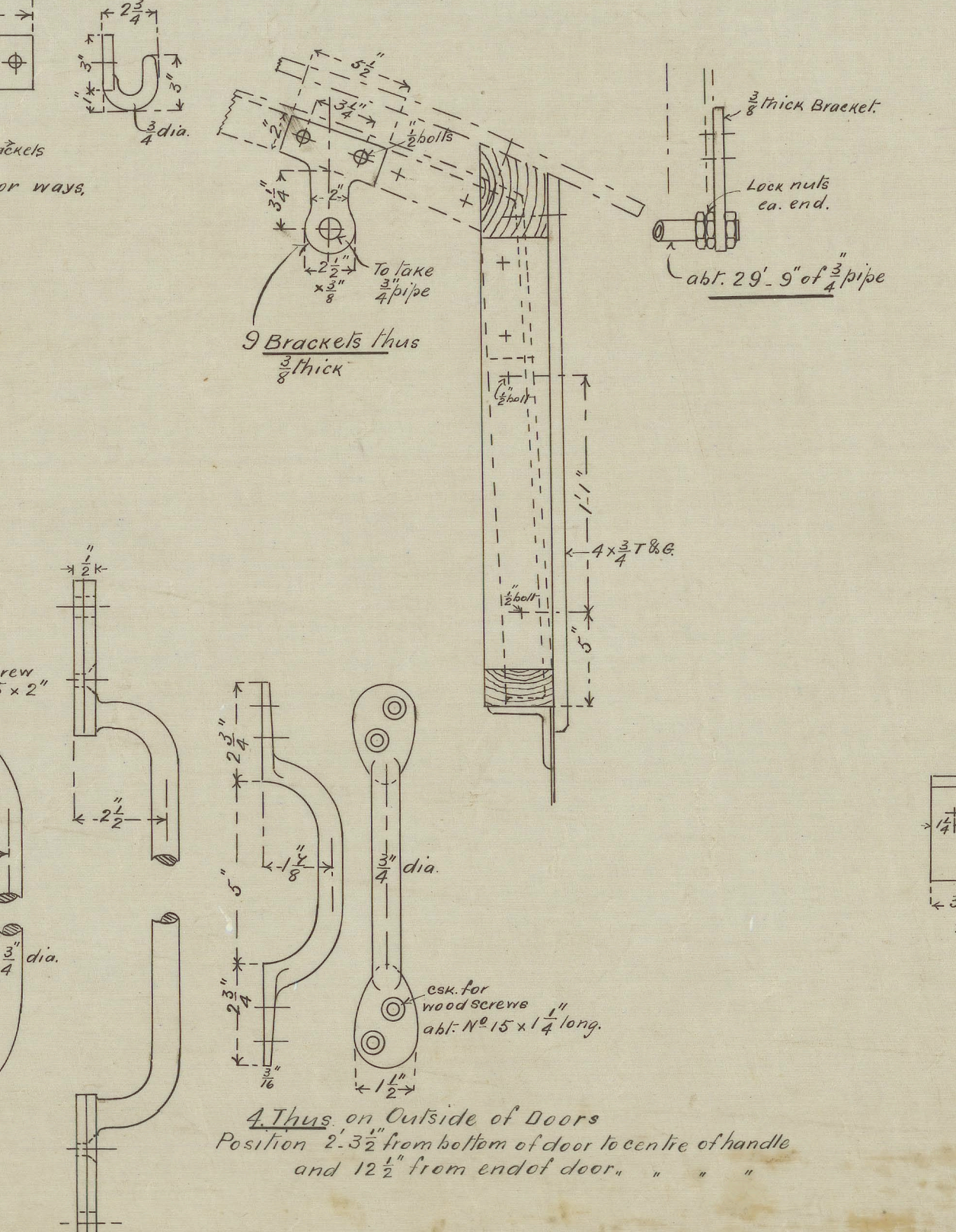
1. Thus bolted to end of truck and to floor.



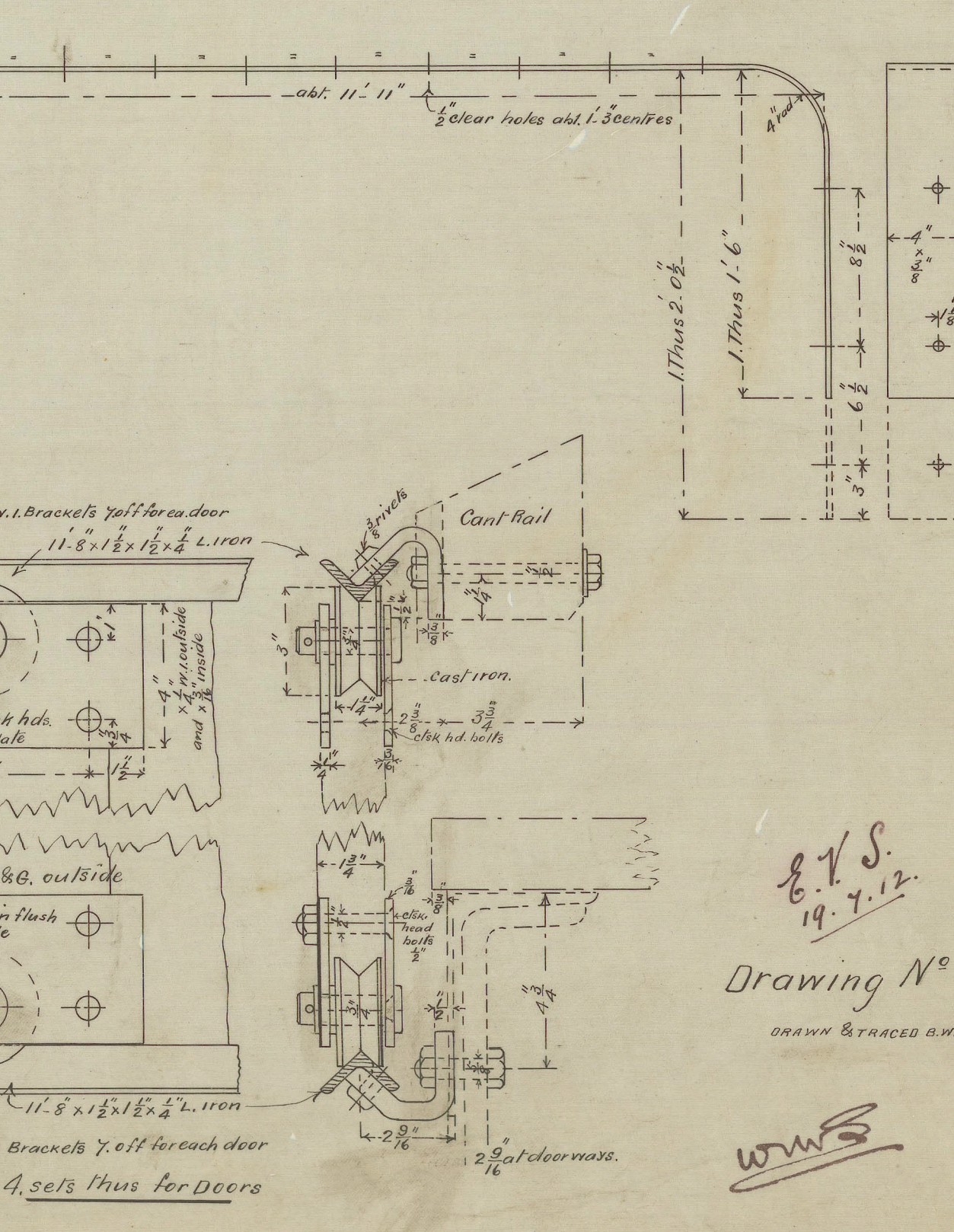
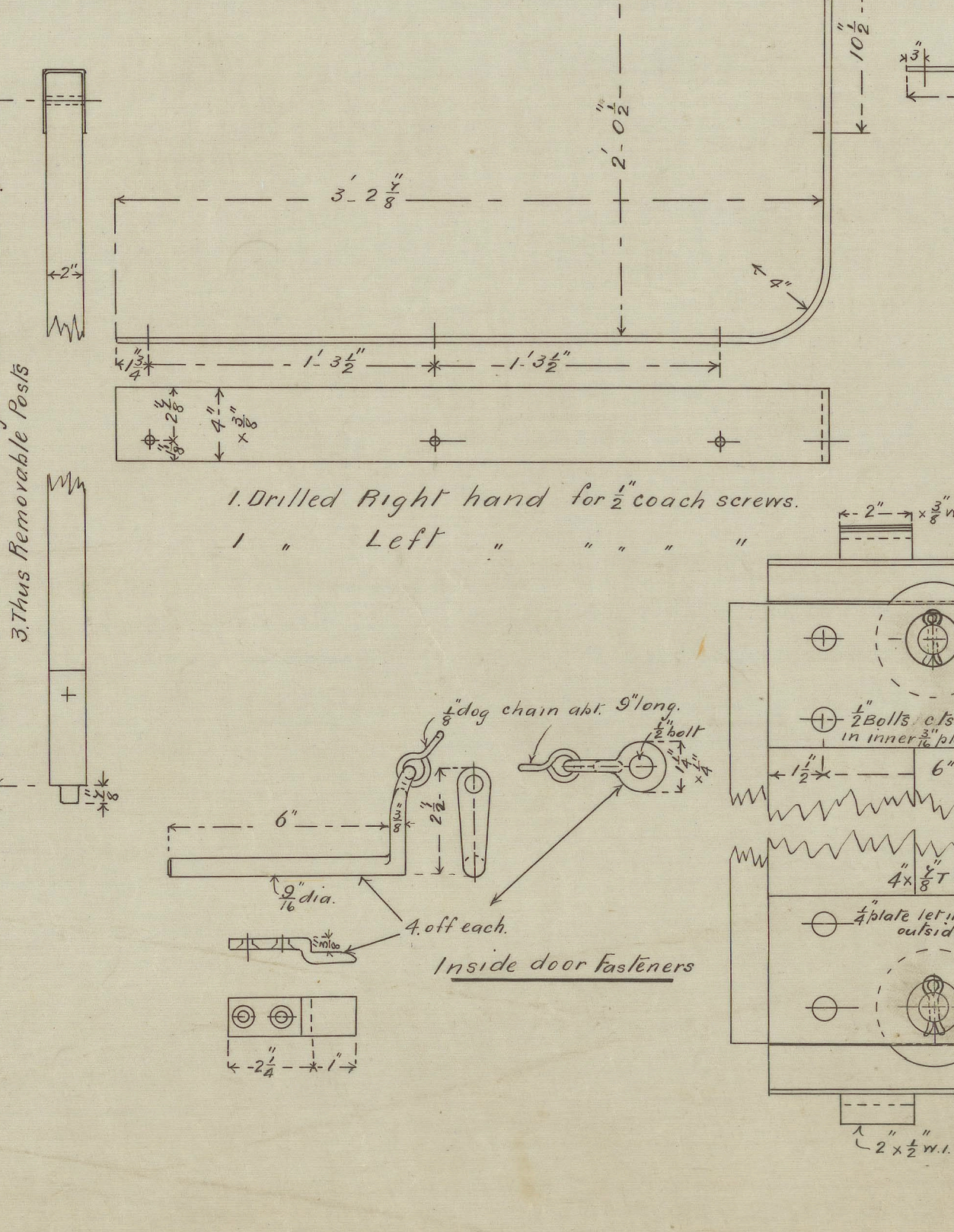
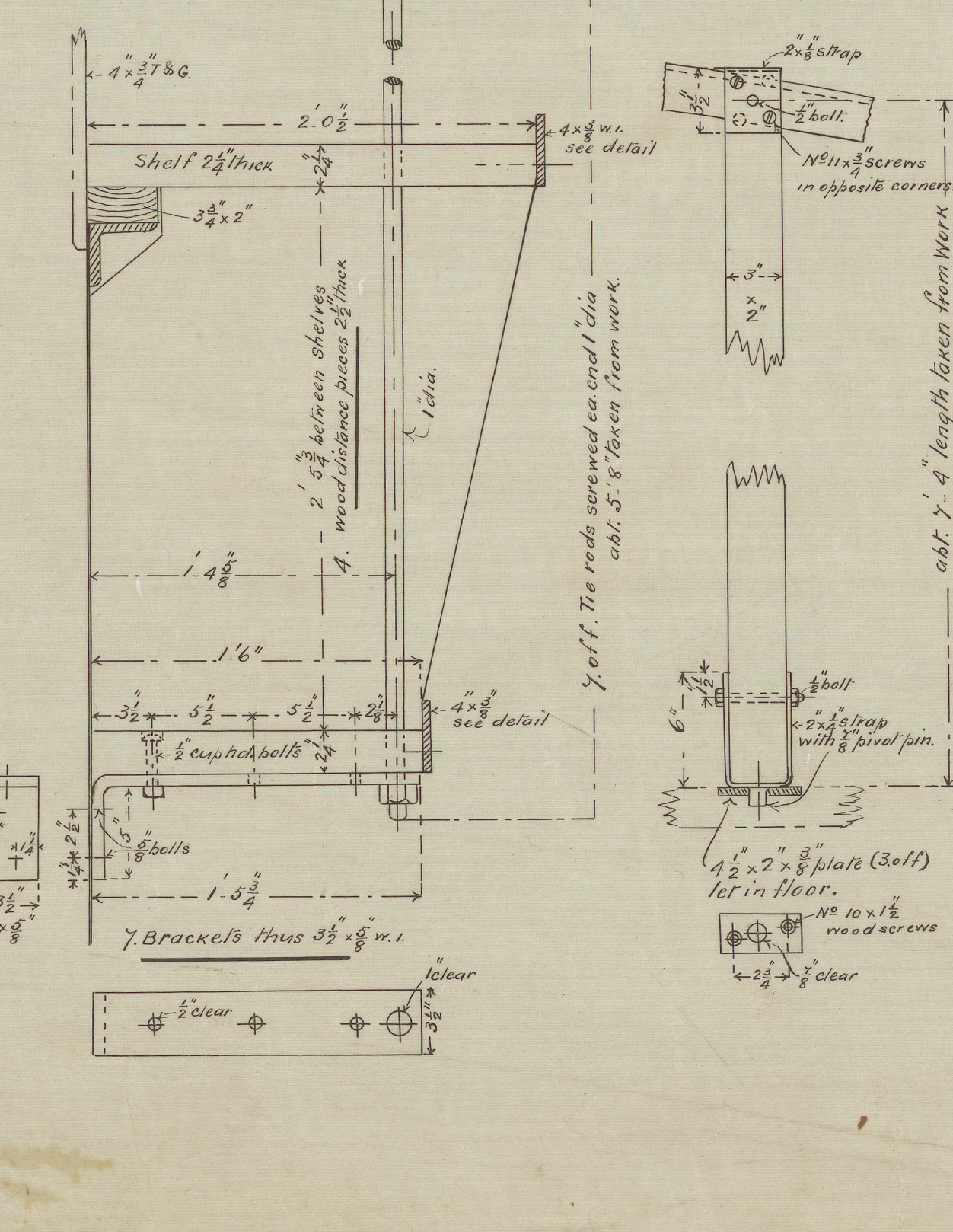
1. Thus bolted to end of truck and to floor.



4. Thus sets of door fasteners.



8. Thus for position see detail of door fastener at A.A.



E.V.S.
19.7.12
Drawing N° 3293
DRAWN BY BRUCE A.H. R. 7.12

WWS